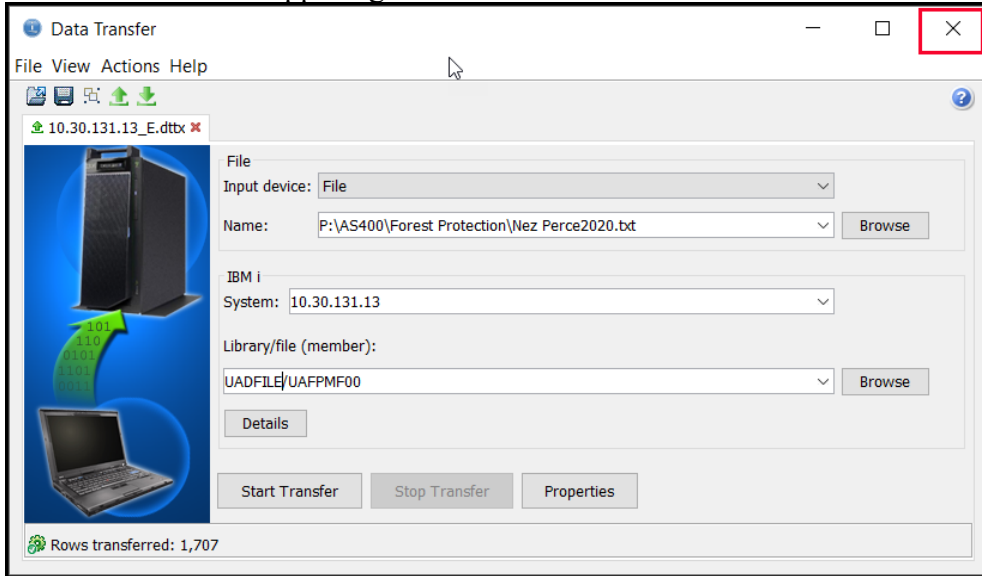
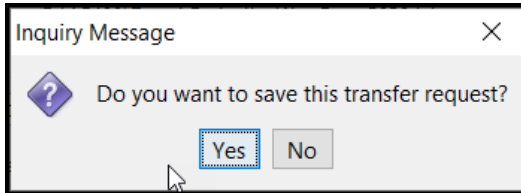


PROCEDURE TO UPLOAD FIRE PROTECTION MASTER FILE TO THE AS/400

13. Click the “X” in the upper right hand corner to close this window.



14. Click “No”. You do not need to save this transfer request.



The Forest Fire Protection Master File is now on the AS/400. You can continue with Step #4 of the Forest Protection Checklist (CL12).