

Printing and Exporting Maps

ISTC Topic:

3.16

In this Chapter you will learn

- How to print a map either directly from ArcMap, or by exporting it first to a PDF file and then printing it.

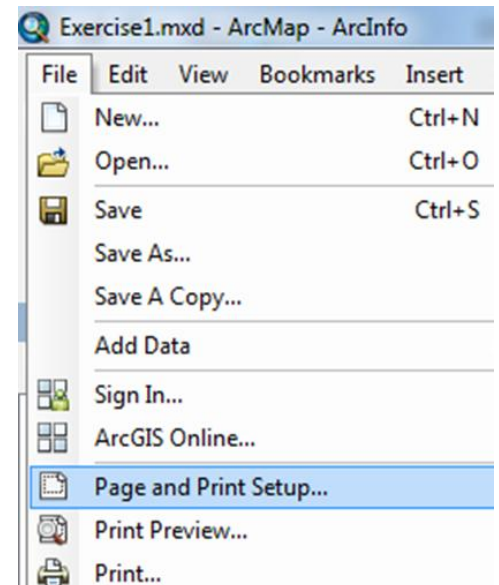
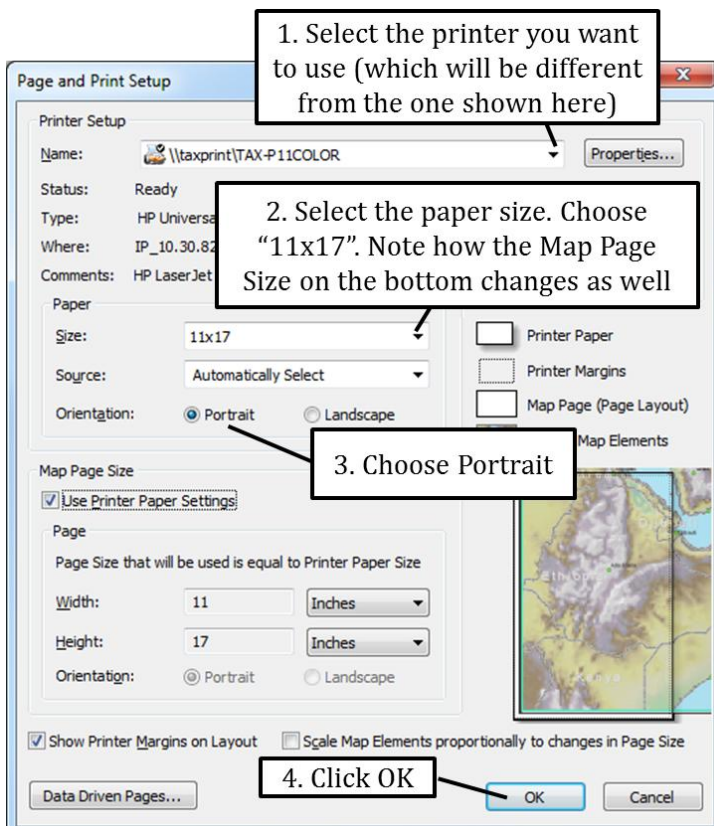
1. Printing a Map from ArcMap

Exercise 1: Printing a map from ArcMap

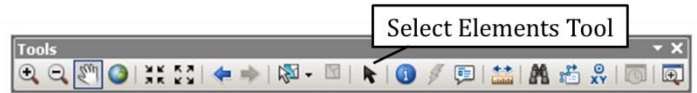
1. Start ArcMap and open Exercise1.mxd in the Topic3_16 folder. Switch to the Layout view.
2. Click File > Page and Print Setup as shown on the right.
3. Currently the page size is set to letter which is 8.5 by 11 inches. Use the instructions below to change the page size to 11by 17 inches.



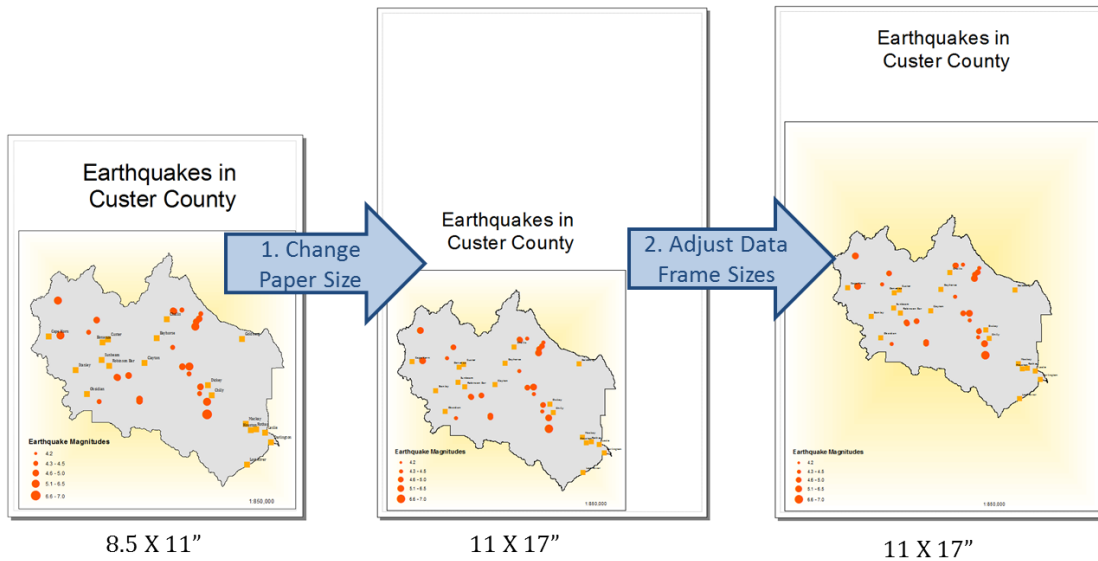
3.16: Printing a Map from ArcMap



4. Notice on the Layout View that your page size has changed to the new settings.



5. Use the Select Elements tool to make your data frame larger to fit the new page size as shown below.

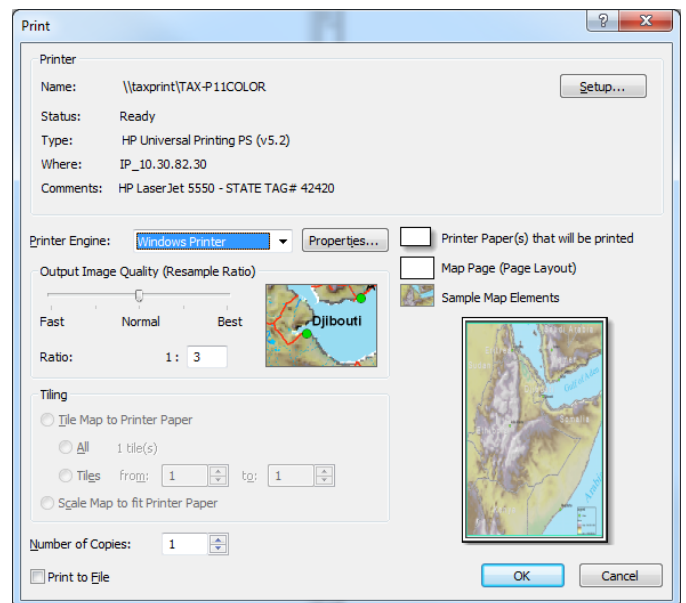


6. Click File > Print Preview to make sure your map looks good and is ready to be printed.

7. Click File > Print. If this tutorial is done in a classroom setting you may not actually be able to print. If you do have access to a printer then

- Check that your printer is turned on
- Choose your Output Image Quality (Normal is the Default)
- Specify the number of copies you wish to print
- Click OK

8. Leave ArcMap open for the next exercise.



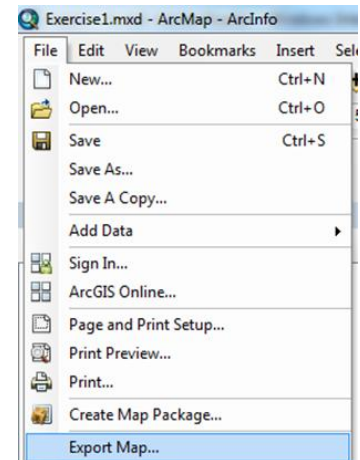
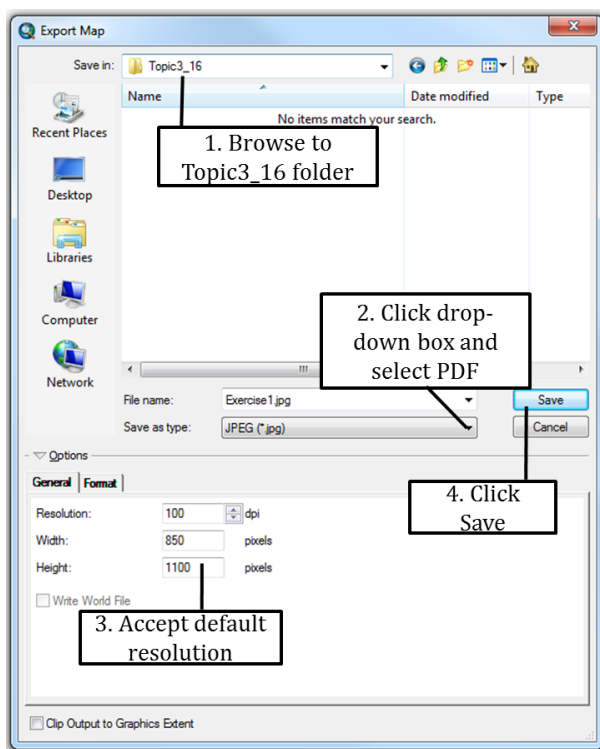
Exercise 2: Exporting a map to pdf or other format

A different way to print a map from ArcGIS is to export your map first to a pdf document, and then using Adobe Reader software (which you can download for free from <http://get.adobe.com/reader/>) to set up and print your map.



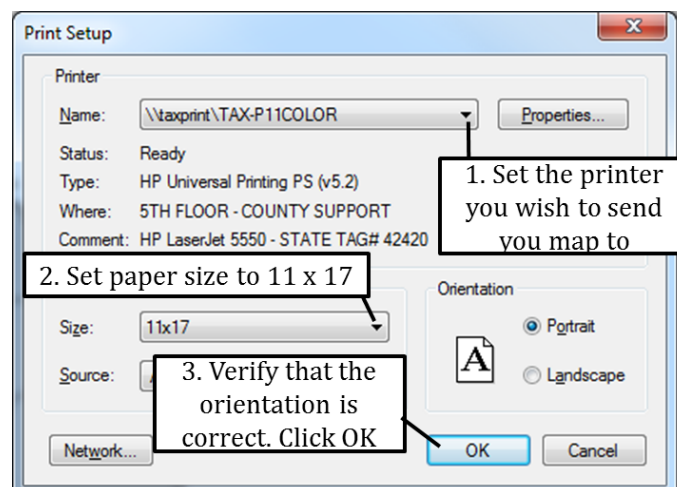
3.16: Exporting a Map to PDF

1. Continue from the previous exercise. Click File > Export map as shown on the right.
2. Use the instructions below to export your map as a .pdf document called Earthquakes.pdf



Tip
If you want to embed your map in a PowerPoint presentation you should export your map as a JPEG. Then you can use the Insert > Picture command in PowerPoint to add your map to the presentation.

3. Close ArcMap and open Adobe Reader. Click File > Open to open the Earthquakes.pdf document you just created.
4. Click File > Print Setup and use the figure on the right hand side to set up the printer and page size.



5. Click File > Print. Set up the dialog box as shown on the right. ONLY click OK if you are connected to a printer.

